

The image features a white car, likely a BMW M6, with a focus on the front grille and a multi-spoke alloy wheel. The car is set against a bright, hazy background. A large, vibrant orange graphic element is overlaid on the image, containing the text 'PSM DYNAMIC' and 'BMW M6 F06/F12/F13 FULL SUIT'. The bottom right corner of the orange area is decorated with a pattern of vertical orange and white stripes.

# PSM DYNAMIC

BMW M6 F06/F12/F13  
FULL SUIT

DYNAMIC STREET ARMOUR



## CONTENTS

### 1 BMW M6 F06/F12/F13 FULL SUIT

PSM DYNAMIC PUSHES LIMITS OF THE POSSIBLE, BUILDING ON BENCHMARKS THAT BECKON TO BE EXCEEDED.  
WE ARE DEDICATED TO THE PRODUCTION OF EXCEPTIONAL AERODYNAMIC AUTOMOTIVE COMPONENTS.  
THIS IS DYNAMIC STREET ARMOUR

All designs are owned by PSM DYNAMIC® 2017  
All rights reserved. No part of this book may be reproduced, stored in a retrieval system or transmitted in any form or by any means, electronic, mechanical or otherwise, without written permission of the copyright owners.

**DYNAMIC STREET ARMOUR**



1

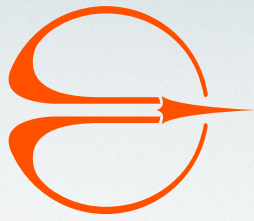
BMW M6 F06/F12/F13  
DYNAMIC STREET ARMOUR





1

# BMW M6 F06/F12/F13 DYNAMIC STREET ARMOUR



A

C

D

E

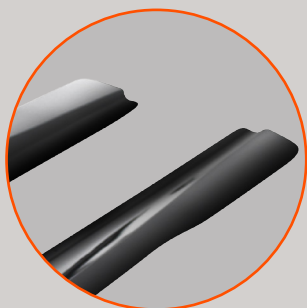
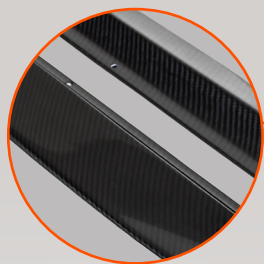
F



**A**

## BMW M6 F06/F12/F13 SIDE SKIRT

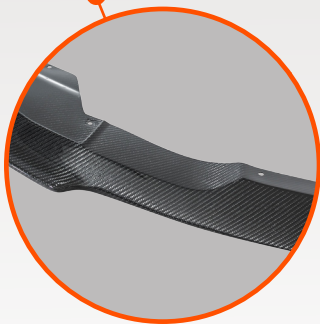
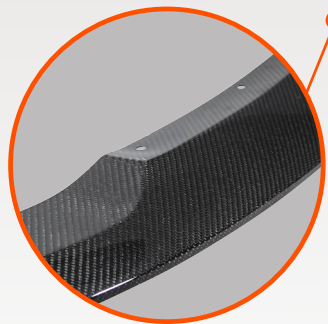
Our design is available for the following BMW models:  
BMW M6 F12/F13 B6331SSCF  
BMW M6 F06 B6431SSCF



**B**

## BMW M6 F06/F12/F13 FRONT SPOILER

Designed for BMW M6 F06/F12/F13 B6231FLCF







C  
D  
E

**1** BMW M6 F06/F12/F13  
**REAR DIFFUSER STAGE 1 SET**

**C** BMW M6 F06/F12/F13  
**REAR EXTENSIONS**

Designed for BMW M6 F06/F12/F13  
B6231RDCF

**D** BMW M6 F06/F12/F13  
**REAR DIFFUSER**

Designed for BMW M6 F06/F12/F13  
B6231RDCF



Please note: Parts C,D&E are only available together as Rear Diffuser Stage 1 Set





**1** **BMW M6 F06/F12/F13  
REAR DIFFUSER STAGE 2 SET**

**C** **BMW M6 F06/F12/F13  
REAR EXTENSIONS**

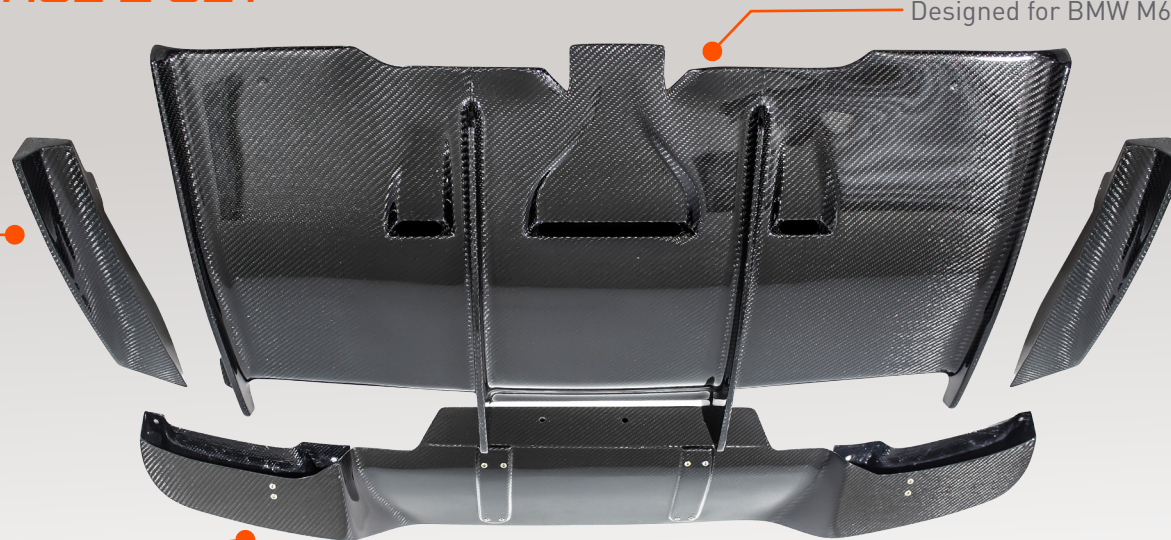
Designed for BMW M6 F06/F12/F13  
B6232RCCF

**D** **BMW M6 F06/F12/F13  
REAR DIFFUSER**

Designed for BMW M6 F06/F12/F13  
B6232RCCF

**BMW M6 F06/F12/F13  
REAR UNDER TRAY**

Designed for BMW M6 F06/F12/F13  
B6232RCCF



Please note: Parts C,D&E are only available together as Rear Diffuser Stage 2 Set





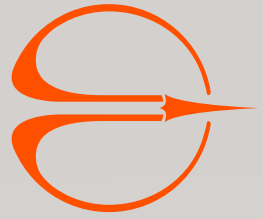
BMW M6 F06/F12/F13  
**TRUNK DECK LID**

BMW M6 F06/F12/F13 B6231DLCF





**PSM**  
**DYNAMIC**



BMW M6 F06/F12/F13 FULL SUIT

DESIGNED & MADE IN CALIFORNIA, USA  
ONLY THE FIERCEST FINEST PSM/DYNAMIC.COM